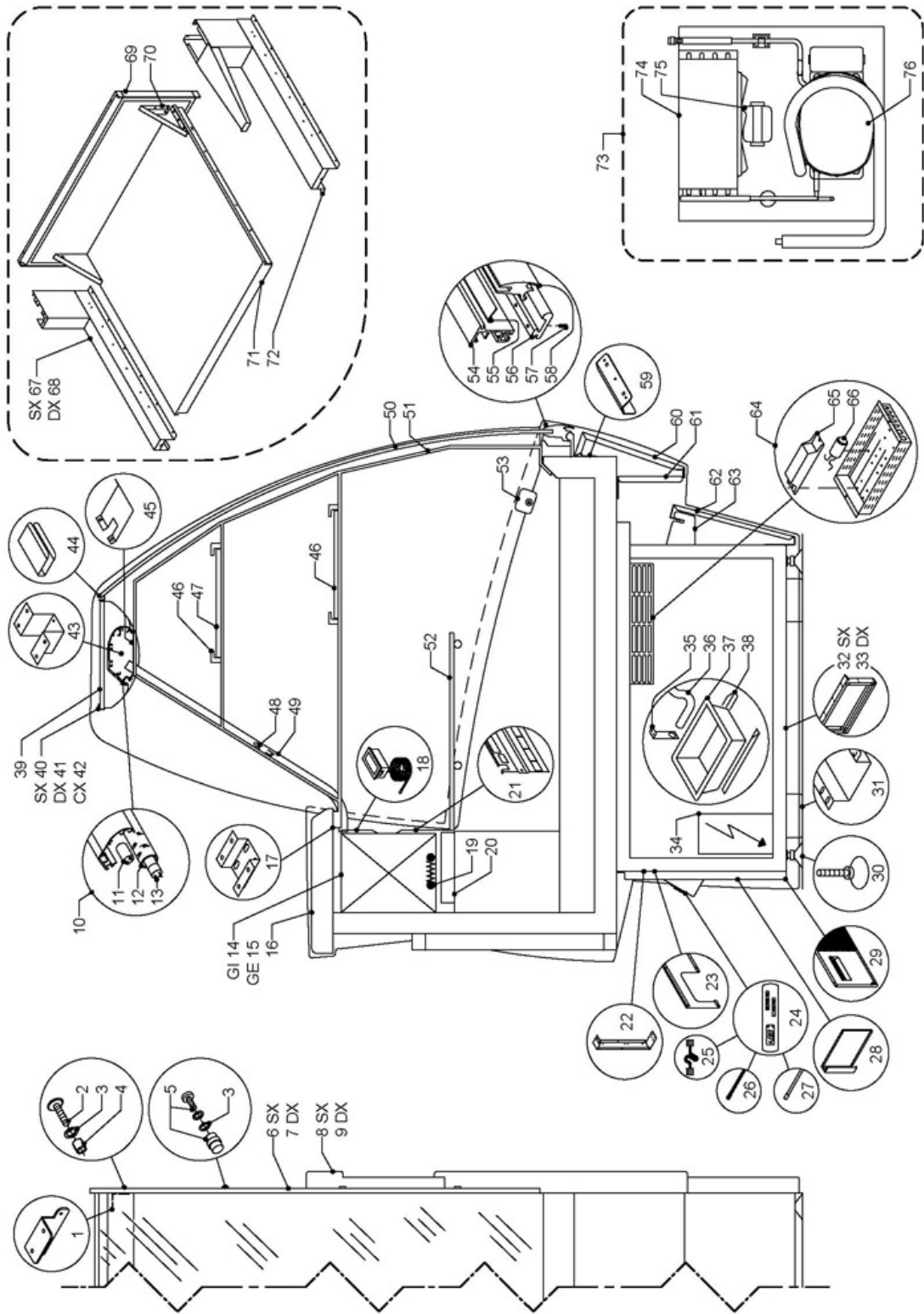


**Sweet 2 L300**



| N° | Codice   | Descrizione                             |
|----|----------|---|
| 1  | 725702   | STIRRUP ZNT CANOPY HOLDER SWEET2/ZARA   |
| 2  | 038000   | SCREW POLIERS TC- M4X15 INOX            |
| 3  | 039348   | PLASTIC WASHER 6X18 FOR SIDE GLASS      |
| 4  | 379328   | PVC CAP FOR GLASS                       |
| 5  | 040097   | SUPPORT FOR INTERM.GLASS SWEET          |
| 6  | 725505   | SPALL.TERMOF.SX RAL9006 SWEET2          |
| 7  | 725506   | SPALL.TERMOF.DX RAL9006 SWEET2          |
| 8  | 725511   | CRISTALLO LAT.SX SWEET2 STD             |
| 9  | 725512   | CRISTALLO LAT.DX SWEET2 STD             |
| 10 | 725524   | ASS.PLAF.CABL.SWEET2 STD 300            |
| 11 | 048940   | STARTER ST 111 OSRAM                    |
| 12 | 046632   | COVER LAMP PROFILE IM-29 L= 585         |
| 13 | 046762   | LAMP.FL.L.18W/840 (D.26X590)            |
| 14 | 041447   | EVAPORATOR WITH SUCTION PIPE SWEETL300  |
| 15 | 041452   | COM.EV.SWEET ST.GE.300                  |
| 16 | 725521   | WOOD WORKING SHELF MM 250 SWEET2 2812   |
| 17 | 650909   | OMEGA FISS.MENSOLA SWEET 300            |
| 18 | 042721   | DIGITAL THERMOMETER -40/+70 24W         |
| 19 | 046556   | DOUBLE DEFROST HEATER D6 L2720          |
| 20 | 650514   | WATER TRAY L=300                        |
| 21 | 650544   | GRID FOR EVAPOR.COVER SWEET L=300       |
| 22 | 611011   | MIDDLE FRAME ELIOS/ASTRA/SWEET          |
| 23 | 650624   | COVER BACK PLATE SWEET L=300            |
| 24 | 042760   | INTERFACE FOR ELECTRONIC CONTROL BOARD  |
| 25 | 042727   | CAVO CONNES.EVCO1256800044 MT1          |
| 26 | 04510552 | PROBE FOR TELETHERM.NTCIP68 L=4000BLACK |
| 27 | 04510550 | PROBE FOR TELETHERM.NTCIP68 L=4000GREEN |
| 28 | 725584   | TAMP.LAT.CONDENSATORE SWEET2            |
| 29 | 681296   | COVER GRID CONDENSER MARTE/MAJOR        |
| 30 | 37559000 | ADJUSTING FRONT FOOT M10X65 D35 RAL9006 |
| 31 | 611012   | FRAME CROSS MEMBER SWEET L=300          |
| 32 | 650549   | FRAME LEFT SWEET                        |
| 33 | 601000   | FRAME ELIOS/ASTRA/MINOR                 |
| 34 | 681003   | WIRED POWER MODULE EVG003               |
| 35 | 552218   | BRACKET FOR PIPE H2O COND.              |
| 36 | 00170612 | GREEN PLASTIC PIPE D20-27               |
| 37 | 045651   | WATER PLASTIC TRAY CM.10X36X9H          |
| 38 | 621062   | "C" PROFILE TO SUPPORT WATER TRAY       |
| 39 | 725537   | CRIST.RENDIR.SWEET2 L100                |
| 40 | 725513   | SUPP.SX RENDIR/PLAF.SWEET2 STD          |
| 41 | 725514   | SUPP.DX RENDIR/PLAF.SWEET2 STD          |
| 42 | 725515   | SUPP.CX RENDIR/PLAF.SWEET2 STD          |
| 43 | 681457   | OMEGA CANALIZ.ALZATA GIOVE              |
| 44 | 692707   | FERMO CX CANAL.IX VETRI SP6MM           |
| 45 | 681458   | PROTECTION FOR LIGHTING CANOPY GIOVE    |
| 46 | 725815   | FERMO X RIPIANI INT.SWEET2 STD          |
| 47 | 725685   | CRIST.INTERM.SWEET2 STD L100            |
| 48 | 592311   | CAVO 7X1MMQ ILLUMINAZIO.ALZATA          |
| 49 | 725522   | TUBO X PASS.CAVI PLAF.SWEET2            |
| 50 | 725500   | CRISTALLO CURVO SWEET2 L=100            |
| 51 | 725581   | MENSOLA DI CANAL.ALZATA SWEET2          |
| 52 | 650507   | LOWER GLASS SHELF SWEET L=100           |
| 53 | 049218   | PLASTIC CLAMP FOR SIDE GLASS            |
| 54 | 725829   | PR.FRONT.ALL.725816 SWEET2 300          |
| 55 | 725571   | PROF.GUARNIZIONE FRONT.SWEET2           |
| 56 | 725830   | PR.RIBAL.ALL.725817 SWEET2 100          |
| 57 | 038546   | GRANO PIANO UNI5923 M4X10 ZNT.          |
| 58 | 725831   | PR.MANIG.ALL.725818 SWEET2 100          |
| 59 | 725517   | SQUADRETTA SUPERIOR.DEC.SWEET2          |
| 60 | 725599   | RED RAL3020 DEC.TRIMS SWEET2 300        |
| 61 | 725518   | SQUADRETTA.CENTRALE DEC.SWEET2          |
| 62 | 725587   | FRONT PLINTH RAL9006 SWEET2 L300        |
| 63 | 725516   | LAM.SUPPORTO ZOCCOLO SWEET2             |
| 64 | 550338   | PAN.REAT.CABL.3X20 220/50HZ             |
| 65 | 046948   | BALLAST 20W 220/50HZ                    |
| 66 | 045603   | CAPACITOR MF8                           |
| 67 | 650616   | BOTTOM SHELF L WITH BRACKET SWEET       |
| 68 | 650617   | BOTTOM SHELF R WITH BRACKET SWEET       |
| 69 | 650628   | PORTELLO CASSETTONE/A SWEET             |
| 70 | 650669   | HOLDER FOR SWEET DRAWER                 |

| <b>N°</b> | <b>Codice</b> | <b>Descrizione</b>                      |
|-----------|---------------|---|
| 71        | 650698        | S/S SLIDING SHELF SWEET DRAWER          |
| 72        | 650621        | MIDDLE BOTTOM SHELF WITH BRACKET SWEET  |
| 73        | 098518        | COND.UNIT R404A E9213GK ASTRA/GIOVE 325 |
| 74        | 041895        | CONDENSER                               |
| 75        | 043042        | FAN MOTOR FOR COMPRESSOR 18/73 W        |
| 76        | 045348        | COMPRESSOR R404A ASPERA E9213GK         |