

FRIGORIFERO DIGITALE

LEGENDA

- MA : MORSETTIERA PRINCIPALE
- MB : MORSETTO AUSILIARIO 3 POLI
- C1 : RELE' DI POTENZA
- E2 : TERMOSTATO CONTROLLO SBRINAMENTO (8°C)
- E3 : TERMOSTATO DI SICUREZZA (20°C)
- F1 : FILTRO ANTIDISTURBO
- B1/2 : MICRO PORTA (X)
- M1 : COMPRESSORE
- M2 : VENTILATORE CONDENSATORE
- M3-1/2/3 : VENTILATORE CELLA
- ML1/2 : MODULO LED
- MP : TERMOREGOLATORE DIGITALE
- R0 : RESISTENZA SCARICO CONDENSA
- R1-1/2 : RESISTENZA CORNICE MOBILE
- R2 : RESISTENZA DI SBRINAMENTO
- S1 : SENSORE DI TEMPERATURA
- S2 : SONDA CONDENSATORE (X)
- S3 : SONDA AMBIENTE (X)
- V1 : ELETTROVALVOLA (X)

ML2,R1-2 : COMPONENTI NON PRESENTI NELLA VERSIONE 1M

SEE TABLE 1

(X) : VEDERE TABELLA

DIGITAL REFRIGERATOR

LEGEND

- MA : MAIN TERMINIAL BOARD
- MB : 3 POLE AUXILIARY TERMINAL BOARD
- C1 : POWER RELAY
- E2 : DEFROST CONTROL THERMOSTAT (8°C)
- E3 : SAFETY THERMOSTAT (20°C)
- F1 : RADIO INTERFERENCE SUPPRESSOR
- B1/2 : DOOR MICROSWITCH (X)
- M1 : COMPRESSOR
- M2 : CONDENSER FAN
- M3-1/2/3 : STORAGE COMPARTMENT FAN
- ML1/2 : LED MODULE
- MP : DIGITAL THERMOREGULATOR
- R0 : CONDENSATE DRAINAGE ELEMENT
- R1-1/2 : DOOR HEATING ELEMENT
- R2 : DEFROST HEATING ELEMENT
- S1 : TEMPERATURE SENSOR
- S2 : CONDENSER PROBE (X)
- S3 : AMBIENT PROBE (X)
- V1 : ELECTROVALVE (X)

ML2,R1-2 : COMPONENTS NOT PRESENT ON 1M VERSION

(X) : SEE TABLE

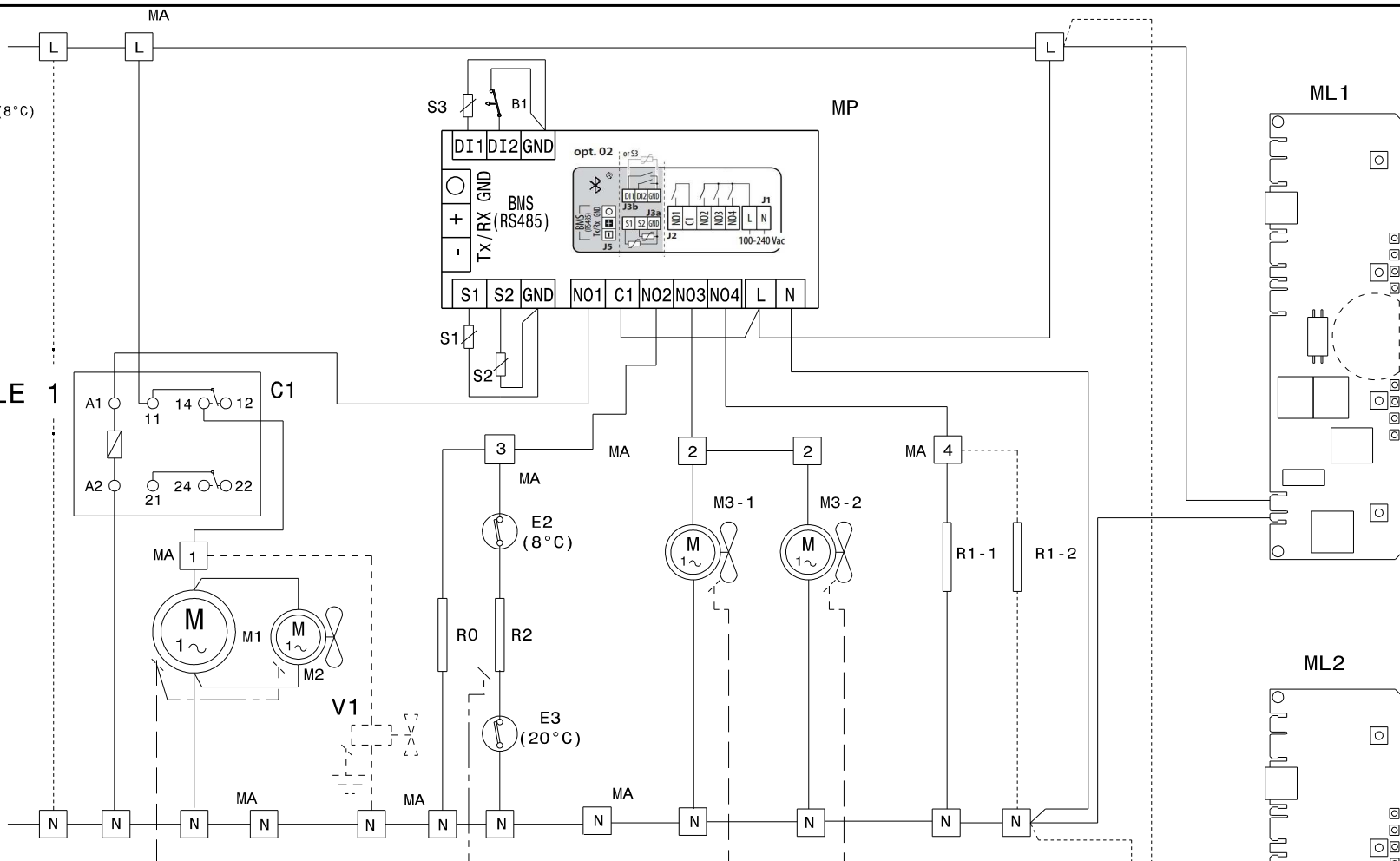
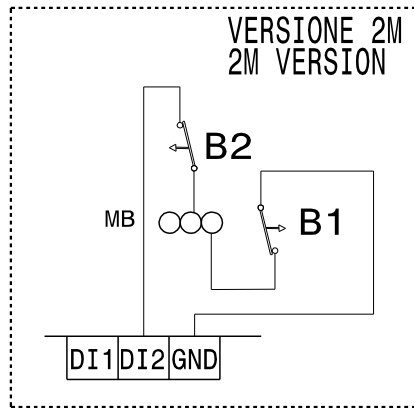
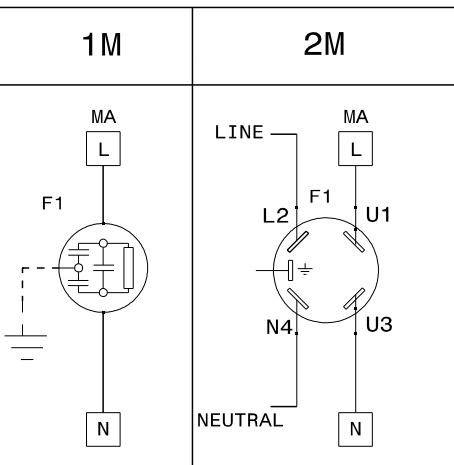


TABLE 1



	PREMIUM		PREMIUM HPE	
	1M	2M	1M	2M
V1	X			
ML-2		X		X
B2		X		X