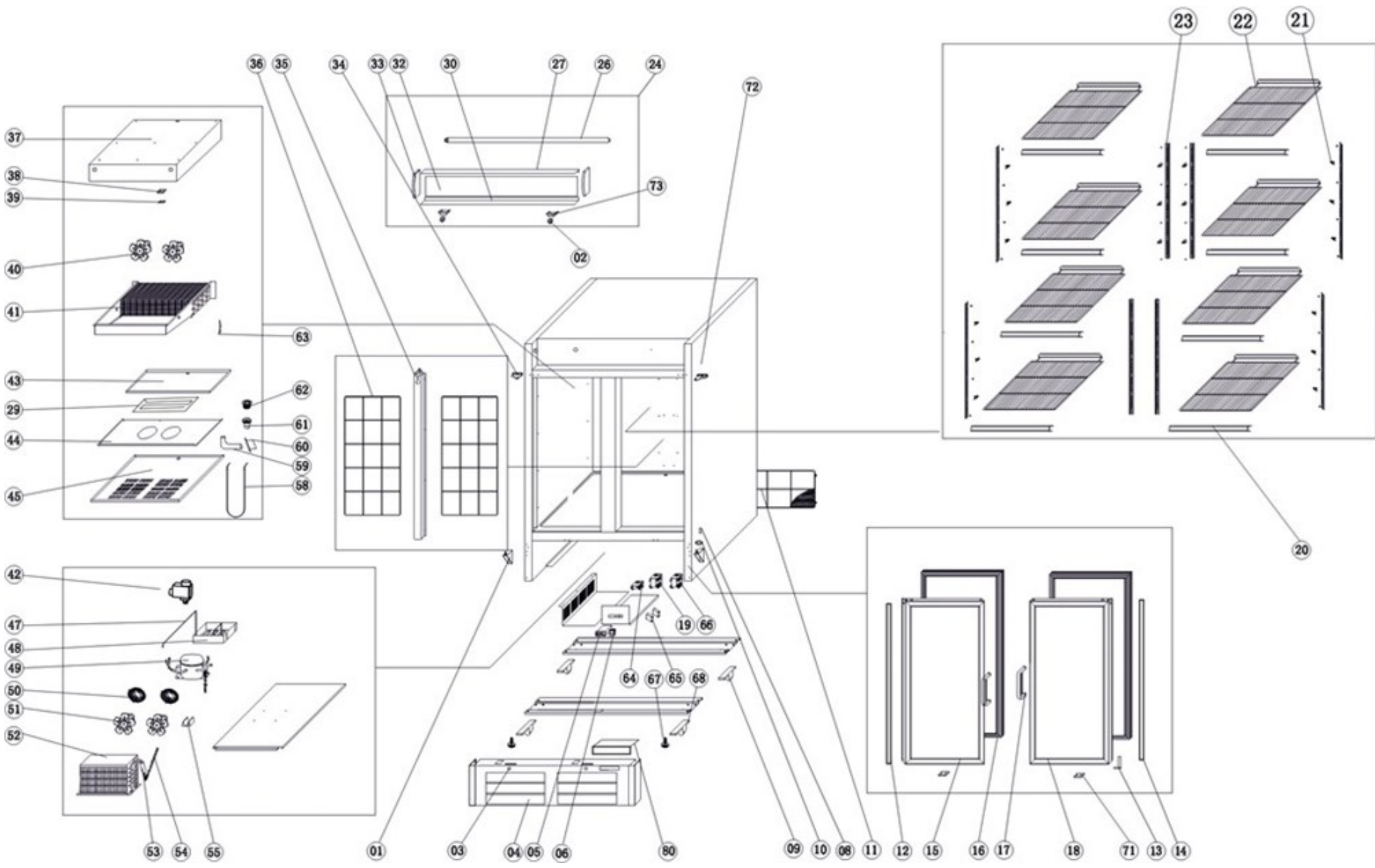


Ersatzteilliste-Explosionszeichnung

Gewerbetiefkühlschrank TKU 980 G-LED

[Art. 435250001]





16193 / NF5000G

Position	ItemNo	Description
01	12809	Door Hinge Down Left/Right
02	12188	Door Switch
03	10683	Lock
04	11026	Front Panel
	11091	Front Panel Hexagonal
05	14066	Thermostat XR06CX 20A Relay Blue Display
06	13754	Main Switch
08	12826	Down Hinge Axis Jacket
09	14606	Back Roller
10	12931	Spacer For Down Hinge
11	11229	Rear Grill
12	15653	LED Strip Left Side
13	12937	Spring Hinge
14	15654	LED Strip Right Side
15	12105	Door Left
16	12589	Gasket
17	12692	Handle Black Front Mounted
18	11911	Door
19	12429	Transformer For Door Heater
	32028	Power Supply 2020
20	14948	List For Shelves
21	15082	Shelf Clip
21ALT	15803	Gas Strut Wings
22	15065	Shelf 615 x 445 mm.
23	15135	Shelf Support
25	10238	Canopy Complete
26	10262	Canopy Lamp Complete
27	10290	Canopy Top Frame
29	13300	Water Pan Heater 400x154
	13301	Water Pan Heater 510x215
30	10230	Canopy Bottom Frame
32	15406	Lamp Cover
33	10241	Canopy End Cover
34	12817	Door Hinge Upper Left
35	10475	Suction Pipe Cover
36	10764	Back Grill
37	14447	Evaporator House
38	13913	Sensor Fixed Clip
39	13896	Probe NTC Dixell/Carel 10 Kohm
40	13315	Circle Fan Bd01-01
41	14336	Evaporator 2014-2
42	15753	Solenoid Valve
43	11513	Evap. Water Pan 733x156x15
44	13316	Circle Fan Support
45	14385	Evaporator Cover
47	14222	Evaporate Pipe
48	11568	Water Box
49	11817	Compressor SC21CNX.2 R290
50	13308	Basket Guard Grill
51	13329	Condenser Fan
52	14117	Condenser
53	15724	Filter Drier 25 G
54	14504	Capillary Tube
55	15693	Drier Support
58	13255	Drain Pipe Heater 1300 mm
59	11593	Water Pipe
60	11441	Drain Hose Sealing
61	11557	Internal Water Pipe
62	11594	Water Pipe Nut
64	13675	Motor Contactor
65	13656	Junction Box

16193 / NF5000G

66	15681	Transformer For LED Light
67	14579	Feet M8
68	14612	Front Roller
71	12120	Door Pad
72	12818	Door Hinge Upper Right
73	12193	Door Switch Holder
80	14035	Thermostat Panel With Cover
81	10696	Lock Bracket
82	14034	Thermostat Panel Cover
9	14606	Back Roller
99	14948	List For Shelves
KS	16872	Drain Pipe Angled

2022-07-06

Finanzen/Service
28307 Bremen
Thalendorststraße 15
Tel.+49 421 48557-0
Fax+49 421 488650
bremen@nordcap.de

Vertrieb Ost
12681 Berlin
Wolfener Straße 32/34, Haus K
Tel.+49 30 936684-0
Fax+49 30 936684-44
berlin@nordcap.de

Vertrieb West
40699 Erkrath
Max-Planck-Straße 30
Tel.+49 211 540054-0
Fax+49 211 540054-54
erkrath@nordcap.de

Vertrieb Nord
21079 Hamburg
Großmoorbogen 5
Tel.+49 40 766183-0
Fax+49 40 770799
hamburg@nordcap.de

Vertrieb Süd
55218 Ingelheim
Hermann-Bopp-Straße 4
Tel.+49 6132 7101-0
Fax+49 6132 7101-20
ingelheim@nordcap.de



www.nordcap.de